

# Groove 24-W

Timber Acoustic Panels

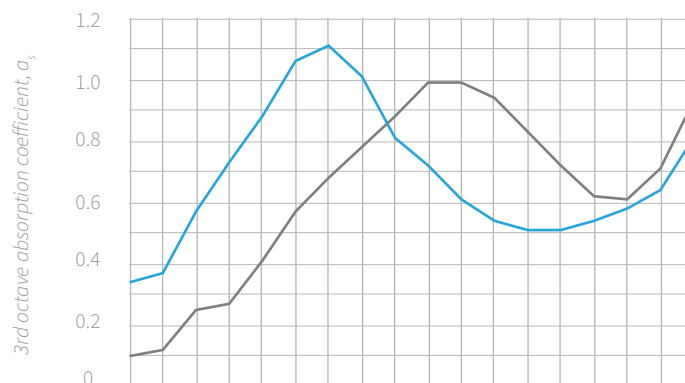


# Groove 24-W - datasheet

8.5mm slot width, 23.5mm slot width



Absorption data for Groove 24-W (EN 354: 2003)



Groove 24-W acoustic performance	$\alpha_w$	Class	125Hz	250Hz	500Hz	1kHz	2kHz	4kHz
70mm cavity including 50mm 40kg mineral fibre	0,60 LM	C	0,45	0,90	1,00	0,60	0,50	0,70
20mm cavity including 20mm Polyester wool	0,70 M	C	0,15	0,40	0,80	1,00	0,70	0,75

## Specification checklist

Fire performance	B-s1-d0 components on request
Demountable ceilings	Grid ceiling option or access hatches
Standard Measurements *made-to-measure on request	3030 x 192 mm (tongue and groove HPL) 3030 x 128 mm (tongue and groove veneer) 3030 x 1200 mm (veneer) 3030 x 1280 mm (HPL)
Thickness	18mm
Weight	11kg/m <sup>2</sup>
Core	Black moisture resistant MDF/Black fire retardant MDF (normal MDF on request)
Can be applied to curved surfaces	Yes
Finishes	HPL - 0.9mm with Over 500 options available. Veneer finishes. Lacquered, Oiled
Can be cut on site	Yes
Clear lacquer sheen levels (veneer)	10-50% for fire retardant lacquer
Wall mouting	Softwood battens at 600mm centres. Black pins fired through grooves.
Ceiling mounting	MF system with MDF strips at 600mm centres or softwood battens at 600mm centres. Black screws through grooves of the panel.
Panel backing	Black fleece tissue inside the panel
Typical absorption used	50mm mineral fibre

---

## Installation - ceilings

---

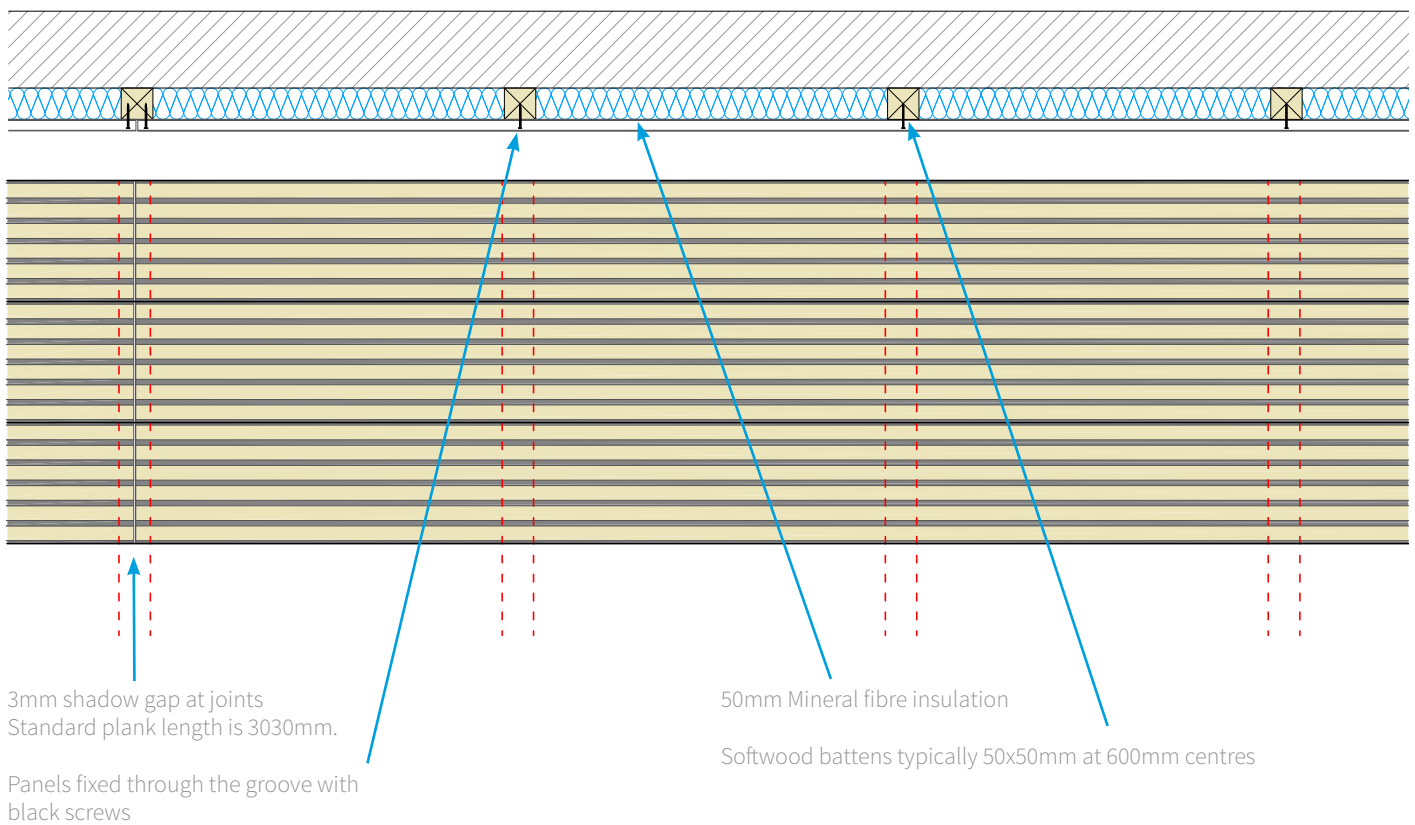
### Groove 24-W - simple installation to battens

This illustrates a simple method of installing the Groove 24-W panels to a ceiling. This model is unique in having 8.5mm slits, which allow for black screws to fix the panels to softwood battens. Alternatively, the same principle can be applied with an MF system, to create a suspended ceiling. We can also provide access panels in this event.

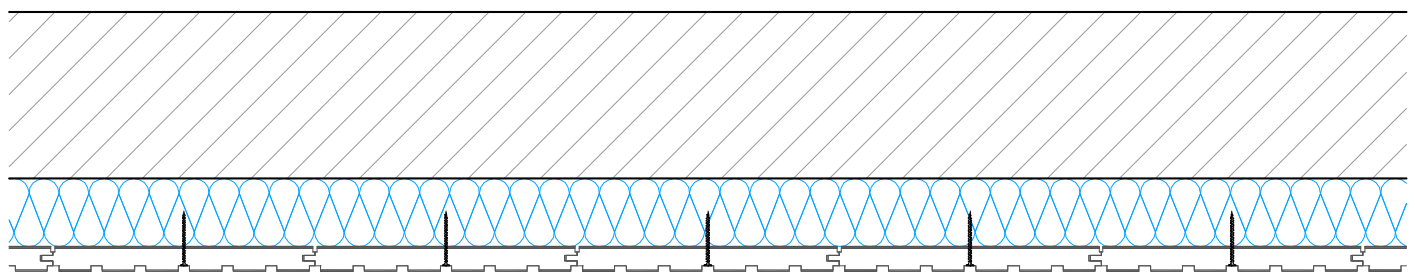
The panels can be easily cut on site, and so working around curves is a simple task, and cutouts can be made for light fittings and services. Where joints are required (panels are 3030mm in length, a 3mm shadow gap should be created, which creates a neat detail, as the core board in black underneath.

There is also the possibility to supply pre-formed rafts and baffles. Contact us for details on how these systems work.

### Typical section - Groove 24-W ceiling (simple batten system)



### Typical section - Groove 24-W ceiling (simple batten system)



Black screws through the boards to softwood battens