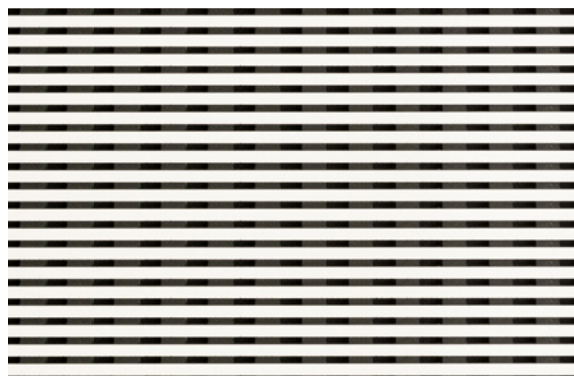
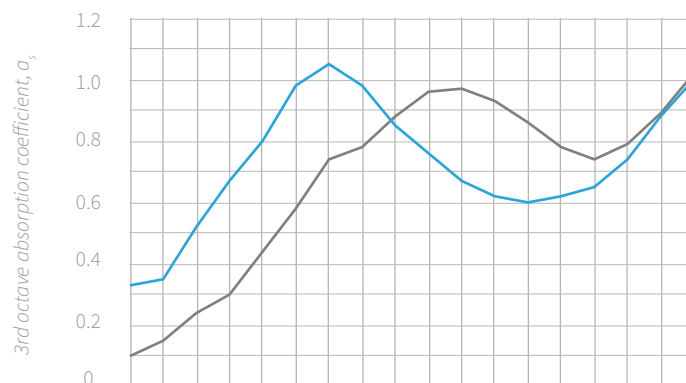


Groove 5 - datasheet

3mm slot width, 5mm slot width



Absorption data for Groove 5 (EN 354: 2003)



Groove 5 acoustic performance	α_w	Class	125Hz	250Hz	500Hz	1kHz	2kHz	4kHz
70mm cavity including 50mm 40kg mineral fibre	0,70 LMH	C	0,40	0,80	0,95	0,70	0,60	0,85
20mm cavity including 20mm Polyester wool	0,75 H	C	0,15	0,45	0,80	0,95	0,80	0,90

Specification checklist

Fire performance	B-s1-d0 components on request
Demountable ceilings	Grid ceiling option or access hatches
Standard Measurements *made-to-measure on request *cupboard doors on request	3030 x 192 mm (tongue and groove HPL) 3030 x 128 mm (tongue and groove veneer) 3030 x 1200 mm (veneer) 3030 x 1280 mm (HPL)
Thickness	20mm
Weight	10.5kg/m ²
Core	Black moisture resistant MDF/Black fire retardant MDF (normal MDF on request)
Can be applied to curved surfaces	Yes
Finishes	HPL - 0.9mm with Over 500 options available. Veneer finishes. Lacquered, Oiled
Can be cut on site	Yes
Clear lacquer sheen levels (veneer)	10-50% for fire retardant lacquer
Wall mouting	Softwood battens at 600mm centres. Black pins fired through grooves.
Ceiling mounting	MF system with MDF strips. Black pins fired through grooves and glued.
Panel backing	Black fleece tissue inside the panel
Typical absorption used	50mm mineral fibre